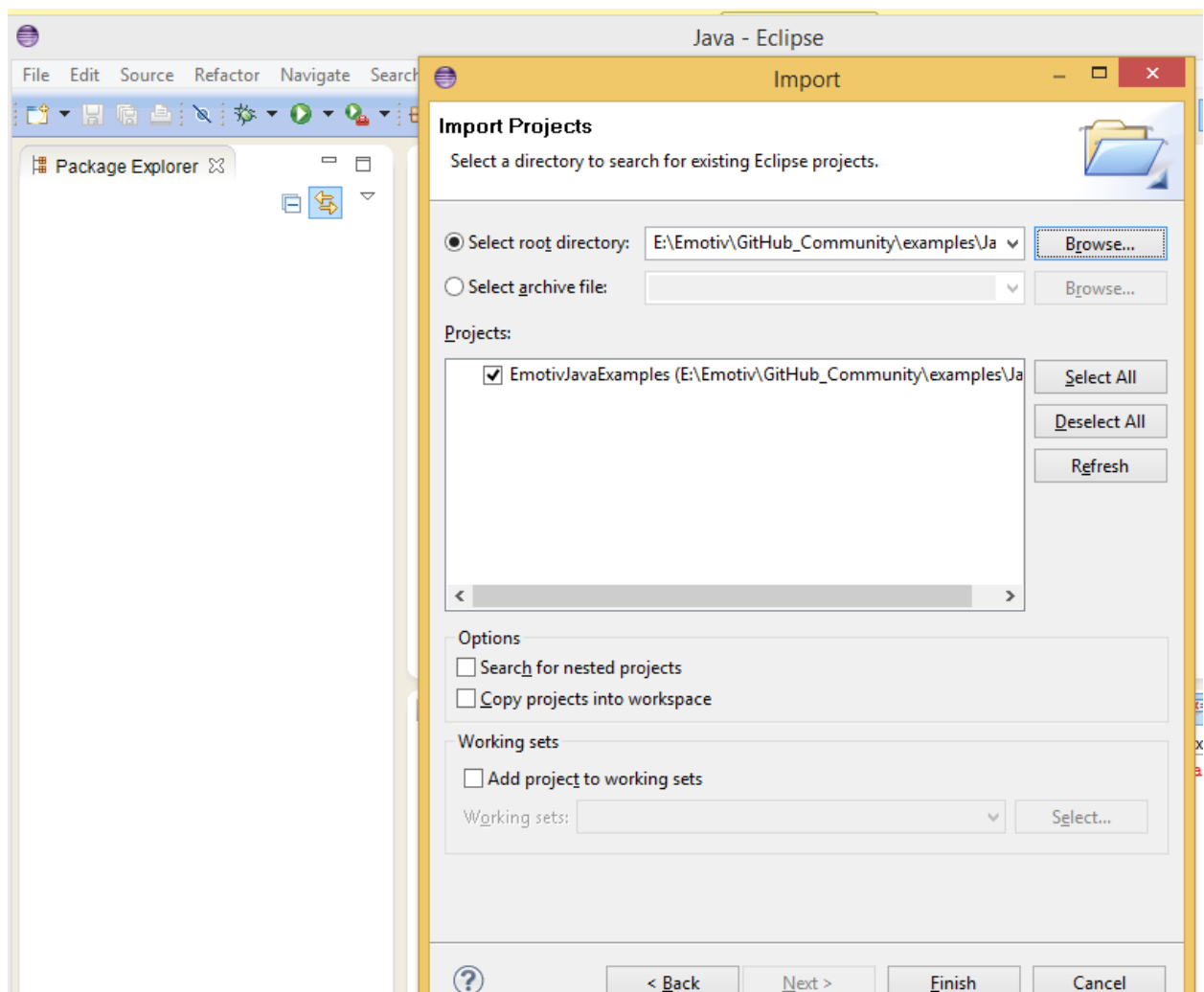


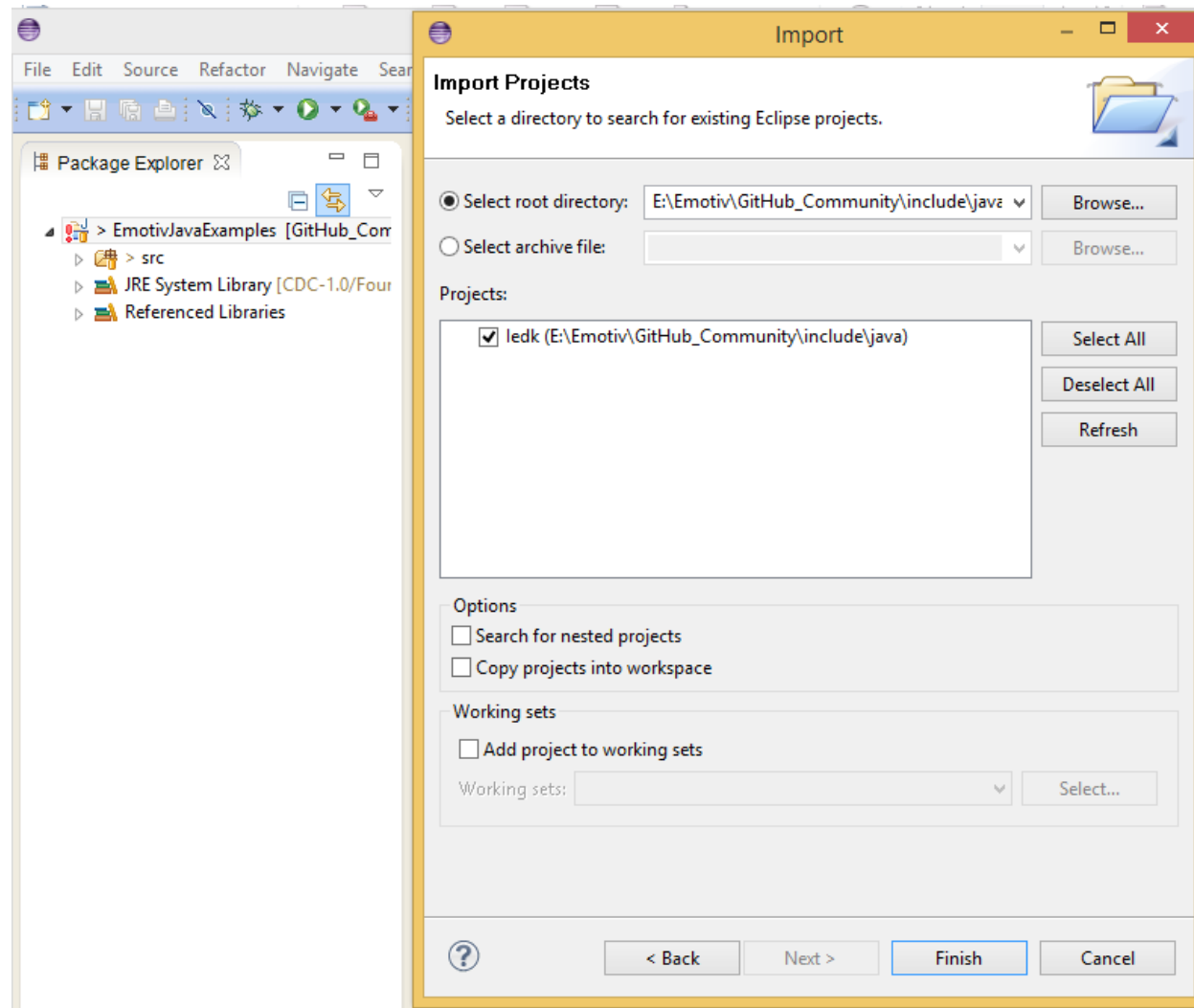
- ★ Install jdk 32 or 64
- ★ Install & open **Eclipse**.
- ★ Import existing project :
  - Open **File** menu/ **Switch Workspace/ Other** , go to directory which you store Java examples.
  - On **Package Explorer** panel, right click and choose Import.
  - Choose **General -> Existing Projects into Workspace / Next**
  - Select root directory, click Browse and go to directory store examples  
GitHub\_Community\examples\Java
  - Check to box in Projects or select Select All button to import examples



- Finish.

- ★ Import include/java

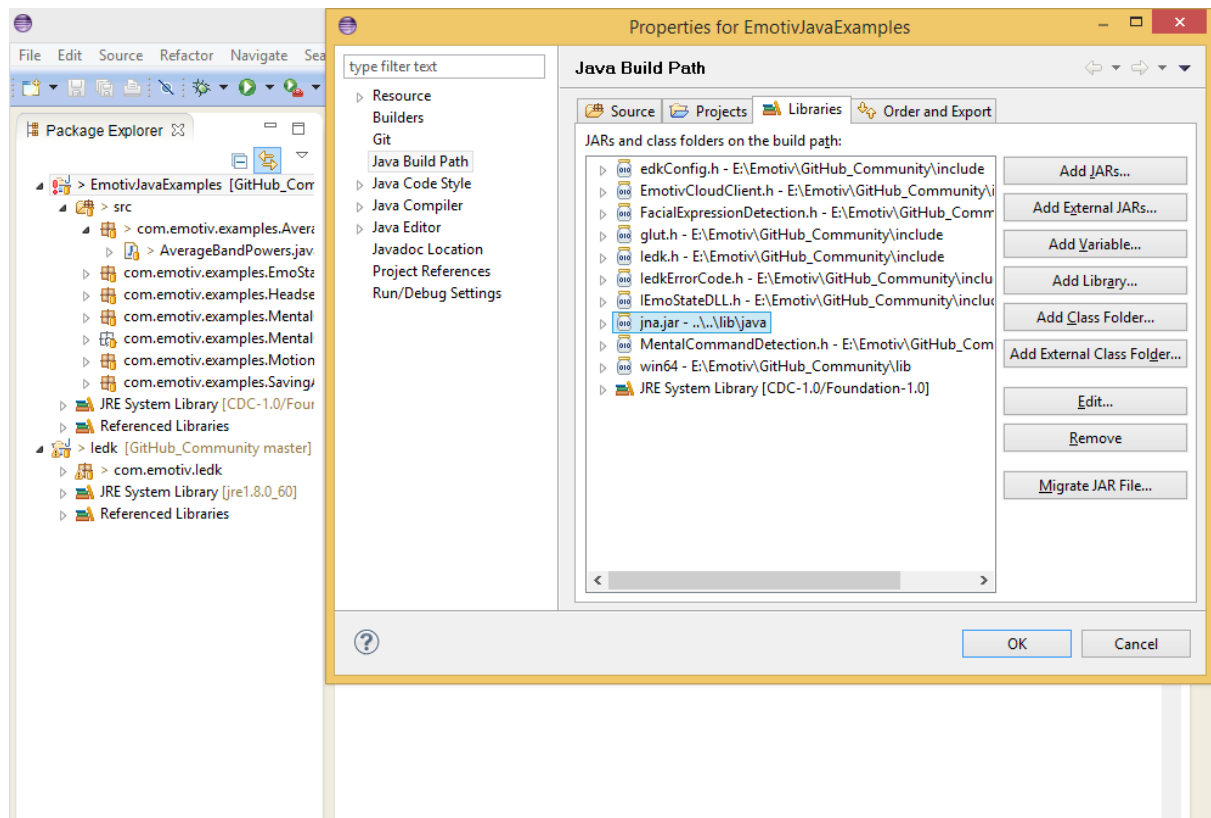
- On **Package Explorer** panel, right click and choose **Import**.
- Choose **General -> Existing Projects into Workspace / Next**
- Select root directory, click **Browse** and go to directory store wrapper files  
GitHub\_Community\include\java
- Check to box in **Projects** or select **Select All** button to import **ledk**



- **Finish**

★ **Link to jna.jar:**

- Right click on project & choose **Properties**.
- Choose **Java Build Path -> Libraries** tab.
- Select **jna.jar** & **Remove**.
- Click on **Add External JARs** & select file **jna.jar** in folder **lib**.



★ If you install jdk 64 bit you need set jre to folder store jre 64 bit and set PATH variable is win64

★ If you install jdk 32 bit you need set jre to folder store jre 32 bit and set PATH variable is win32

To set jre do follow:

On Package Explorer, select JRE system library

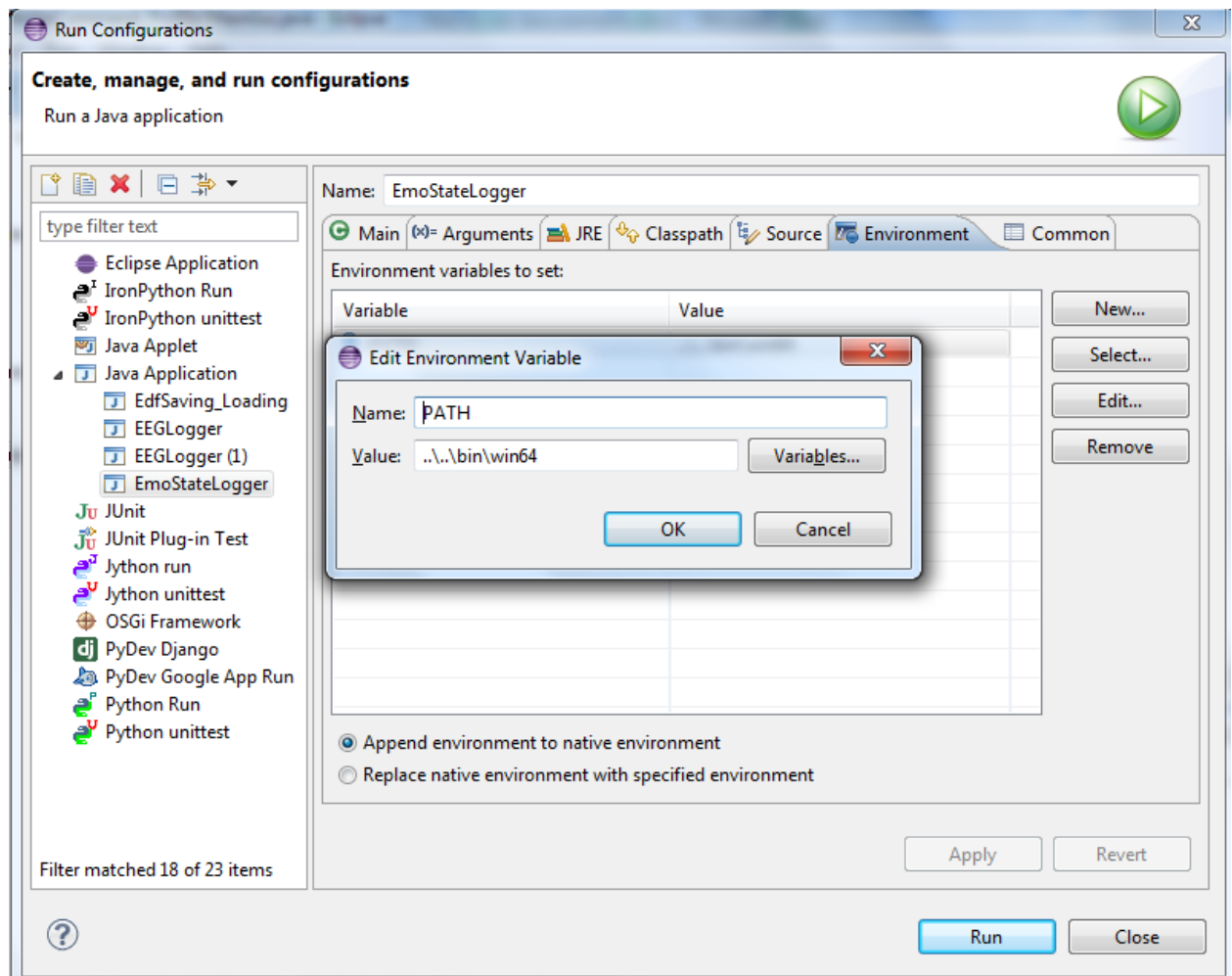
Right mouse and select Properties, click to Installed JRE

You can edit path to jre 32 or 64 corresponding with jdk you install

★ Add PATH

- Select one example you want to run
- Open Run menu/ Run Configurations
- Choose Environment tab/ New

You enter Name and Value variable as follow: (You can do same with 32 bit)



○ OK

★ Click Run for running example